



Woods House, 7 Gatliff Road
London SW1W

GARTONJONES.COM



Woods House, 7 Gatliff Road London, SW1W

£615 Per Week

GARTON JONES.COM

8 Gatliff Road
Grosvenor
Waterside
Chelsea
London
SW1W 8DP

Lettings:
+44 (0) 20 7730 5007
gws@gartonjones.com
www.gartonjones.com

A ONE DOUBLE BEDROOM apartment to rent of approx. 482 sq.ft (44.8 sq.m) in Woods House, part of the popular Grosvenor Waterside development in Chelsea. This property is FURNISHED and benefits include an open plan reception room with a Juliette style balcony, kitchen with dishwasher and washing machine, oven and hob and fridge freezer, a bathroom and storage including built in wardrobes to the bedroom. There is also a 24 hour concierge, an on-site Sainsbury's Local, coffee shop, crèche and Purple Dragon private kids club. The additional amenities including shops, restaurants and the excellent transport links of both Sloane Square and Victoria Station are within walking distance.

- 482 Sq.ft (44.8 Sq.m)
- 1 Double Bedroom
- Modern Bathroom
- Open Plan Reception Room
- 24 Hour Concierge
- Juliette Style Balcony
- On-Site Sainsbury's, Creche, Coffee Shop & Purple Dragon Private Kids Club
- On-Site Residents' Gym & Spa Facilities (Payable)
- Close To Local Shops & Amenities
- Close To Sloane Square & Victoria Station



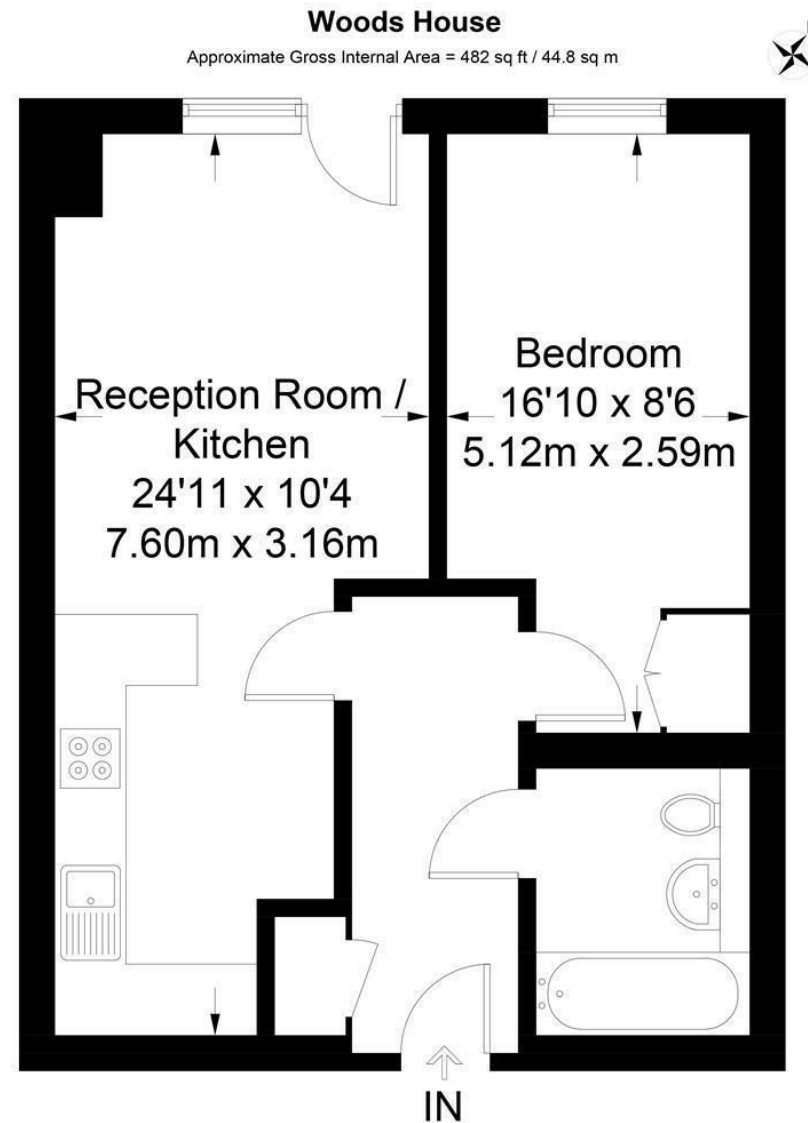
Available via Garton Jones' on-site office at Grosvenor Waterside (underneath Bramah House).

Please note the furniture may differ or not be included to that shown in current photos.

Council Tax: Westminster City Council (band D)

12 month minimum term. 5 week deposit required.

EPC Rating: B (82)



Not to scale, for guidance only and must not be relied upon as a statement of fact.
All measurements and areas are approximate only and have been prepared in
accordance with the current edition of the RICS Code of Measuring Practice.

